

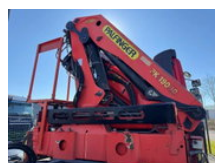
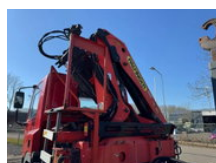
RH TRUCKS

trucks, trailers and machinery

Ginaf M 3232 S 6X2 - EURO 2 + PALFINGER PK19000 + REMOTE + PALIFT HOOK

Ogólne cechy

Cena	€ 17.950
Marka	Ginaf
model	M 3232 S
Podkategoria	Kontener
containerSystemType	hook
licencePlate	BH-FX-46
Przebieg	287.770km
Rok budowy	1999
firstRegistrationDate	12-04-1999
Kolor	Czerwony
Stan	Używane
energyType	energyType.diesel
emissionsClass	Euro 2
advertiserObjectReference	BH-FX-46



Właściwości

Masa własna	15.780kg
payloadWeight	15.720kg
GVW	31.500kg

width

252cm

cabin

No

Ginaf M 3232 S 6X2 - EURO 2 + PALFINGER PK19000 + REMOTE + PALIFT HOOK

Specyfikacje techniczne

numberOfAxles	3
shortAxleConfiguration	6x2
transmissionType	transmissionType.manual
power	340hp

Opis

VIDEO AVAILABLE = Dealer information = We do our best to present the data as accurately as possible; however, no rights can be derived from this data. We can also arrange financing for you within the Netherlands.

accessories

- Aluminiowy zbiornik paliwa
- Centralne smarowanie
- Radio / odtwarzacz CD
- Osłona przeciwsłoneczna
- Air conditioning
- Leaf spring suspension
- Heavy duty engine brake