

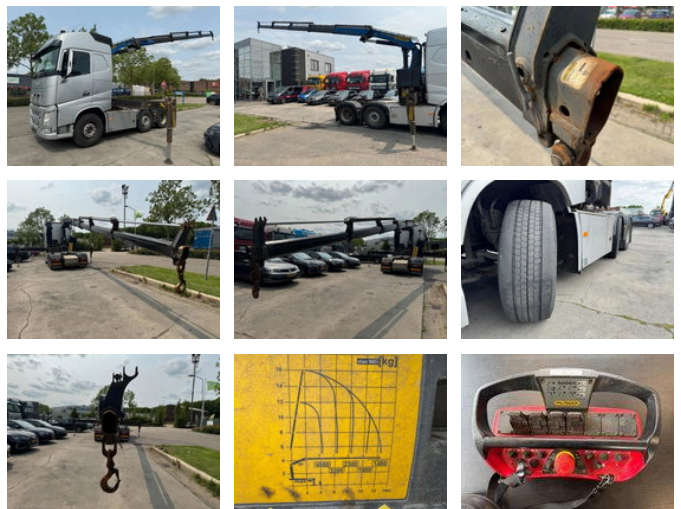
RH TRUCKS

trucks, trailers and machinery

Volvo FH 460 6X2 PALFINGER 23001 + REMOTE CONTROL

General features

Price	€ 54.950
Brand	Volvo
Model	FH 460
Subcategory	Crane truck
Odometer reading	710.047km
Construction year	2016
Date of first registration	04-01-2016
Color	Silver
Condition	Used
Fuel	Diesel
Emission class	Euro 6



Characteristics

Empty weight	12.690kg
Load capacity	14.810kg
GVW	27.500kg
Cabin	Sleeper cabin

Cylinder contents

12.777cc

Volvo FH 460 6X2 PALFINGER 23001 + REMOTE CONTROL

Technical specifications

Number of axes	3
Axis configuration	6x2
Transmission	Automatic
Engine output	460hp

Description

= Additional options and accessories = - Electrically adjustable door mirrors - Remote central locking - Sleeping cabin - Transmitting equipment = Remarks = VIDEO AVAILABLE = Dealer information = We do our best to present the data as accurately as possible; however, no rights can be derived from this data. We can also arrange financing for you within the Netherlands.

Accessories

- Automatic
- Aluminium fuel tank
- Central locking
- Electrically operated windows
- Toolbox
- Fog lights
- Radio/CD player
- Disc brakes
- Sleeper cab
- Heater
- Visor
- Anti-lock braking system
- Air conditioning
- Leaf spring suspension
- Cruise control
- Refrigerator
- Air suspension
- Vehicle heater
- Heavy duty engine brake