

RH TRUCKS

trucks, trailers and machinery

DAF XF 460 8X2 - EURO 6 + HIAB 855 EP-6 + REMOTE + STEERING AXLE

General characteristics

Price € 129.750

Brand DAF

Model XF 460

Subcategory Crane truck

Meter reading 938.826km

Year of construction 2014

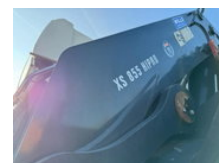
Date of first registration 08-12-2014

Colour Wit

Condition Used

Fuel Diesel

Emission class Euro 6



Properties

Single weight 26.293kg

Load capacity 13.207kg

GVW 39.500kg

Cabin

Sleeping cabin

Serial number

XL9AGCEPA00527203

DAF XF 460 8X2 - EURO 6 + HIAB 855 EP-6 + REMOTE + STEERING AXLE

Technical specifications

Number of axes	4
Axis configuration	8x2
Transmission	Automatic
Assets	462hp

Description

= Additional options and accessories = - Remote central locking - Sleeping cabin - Transmitting equipment = Remarks = VIDEO AVAILABLE = Dealer information = We do our best to present the data as accurately as possible; however, no rights can be derived from this data. We can also arrange financing for you within the Netherlands.

Accessories

- Automatic
- Trailer coupling
- Aluminium fuel tank
- Central locking
- Electrically operated windows
- Electrically adjustable exterior mirrors
- Toolbox
- Fog lights
- Navigation system
- Parkassist
- Radio/CD player
- Disc brakes
- Sleeper cab
- Speed limiter
- Towbar
- Spotlights
- Heater
- Visor
- Anti-lock braking system
- Reversing camera
- Air conditioning
- Leaf spring suspension
- Cruise control
- Refrigerator
- Air suspension
- Vehicle heater
- Coupling
- Heavy duty engine brake